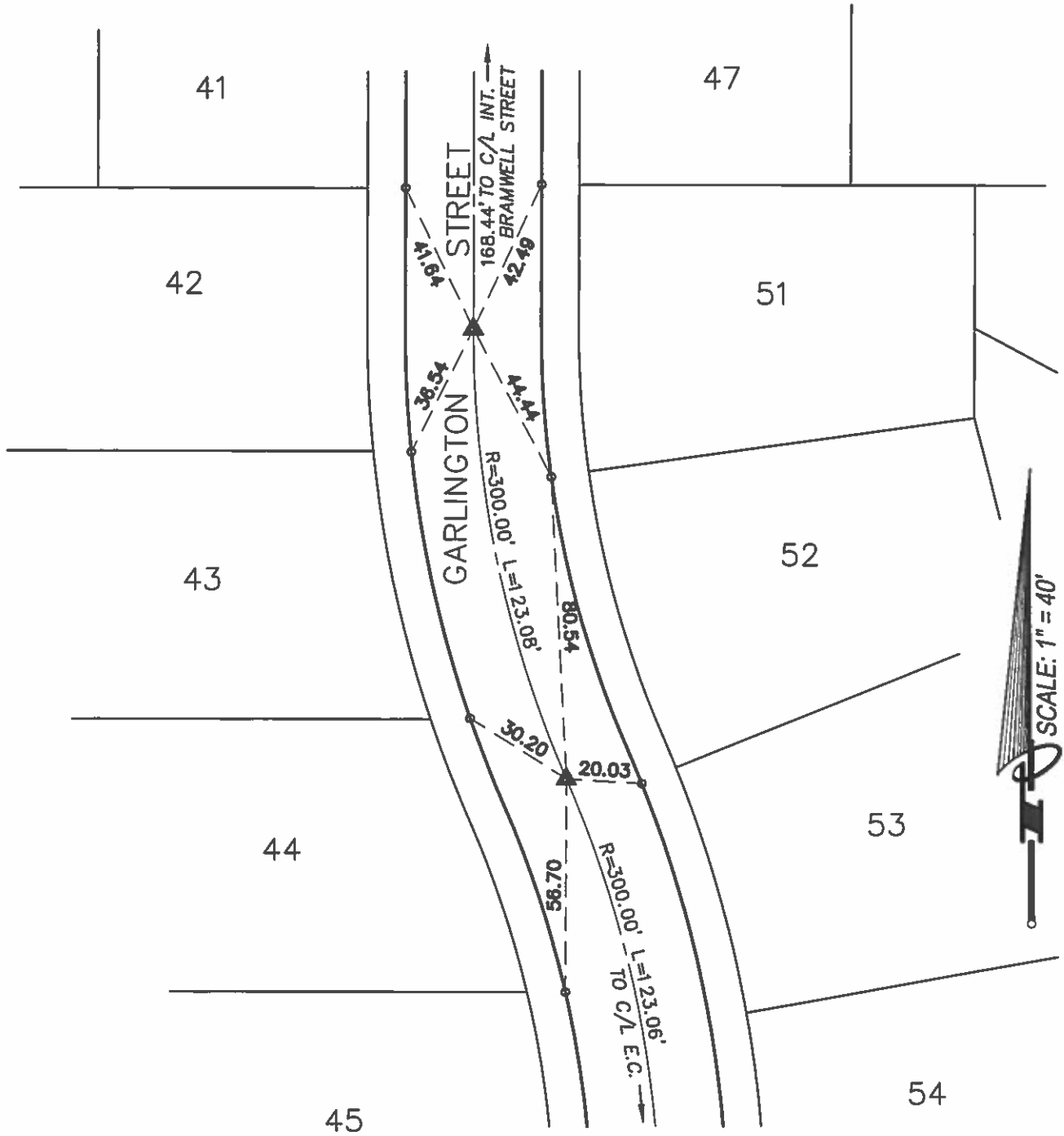


MONUMENT NOTES:

- ▲ INDICATES SET 1" IRON PIPE TAGGED "LS 4400", 1/4" BELOW FINISH SURFACE, UNLESS OTHERWISE NOTED.
- ALL TIE POINTS ARE LEAD & TACK (L&T) TAGGED "LS 4400" ON TOP OF CURB.



APPROVED BY:

DATE:

ACTING CITY SURVEYOR
DENNIS JANDA



19 Spectrum Pointe Drive • Suite 609
Lake Forest, CA 92650
(949) 599-0870
(949) 599-0880 Fax
LAYERS & ASSOCIATES
Civil Engineering, Inc.
PLANNING • ENGINEERING • SURVEYING

5
OF
15

CITY OF MENIFEE

GARLINGTON ST.
CENTERLINE TIES

REVISIONS				REV.	BY:	APR'D	DATE	REV.	BY:	APR'D	DATE
				1				4			
				2				5			
				3				6			

TRACT 31831 M.B. 427 / 82-87