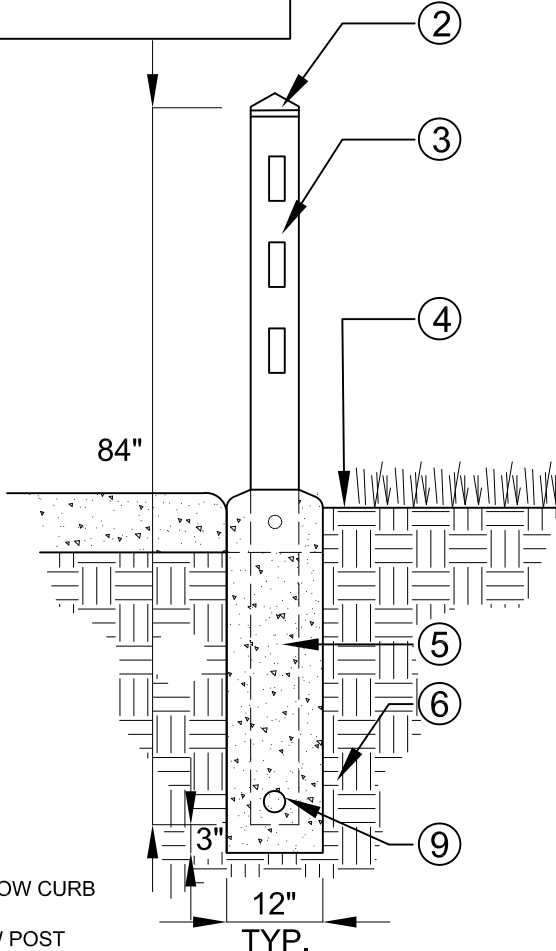
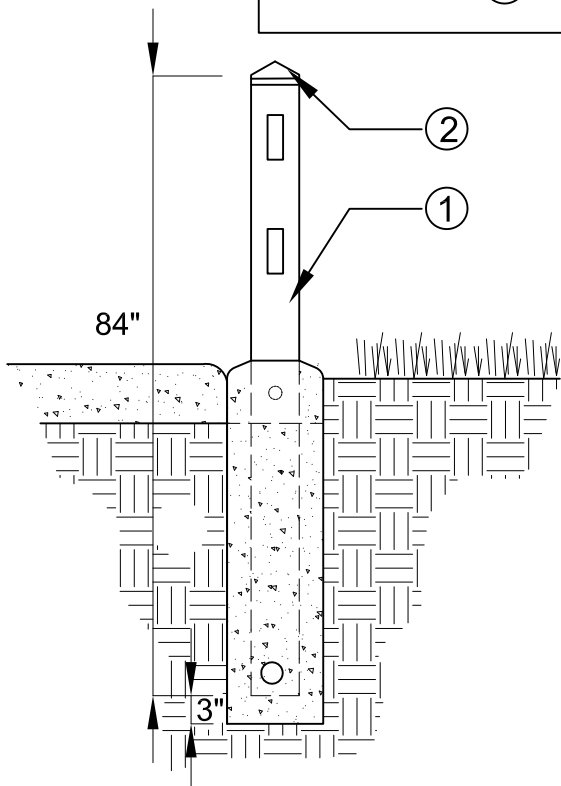
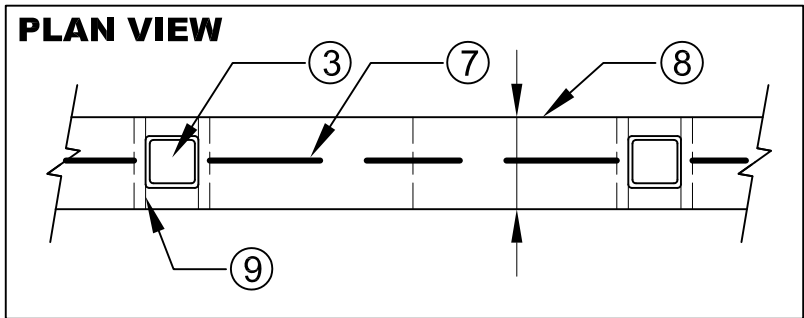


**PLAN VIEW**



1. 2 RAIL FENCING (IF SPECIFIED)
2. POST CAP / SECURE WITH STAINLESS STEEL TAP SCREW (TYP.)
3. 3-RAIL 5.5-INCH MIN. HDPE POST @ 8' O.C. MAX.
4. FINISH GRADE 1-INCH BELOW CURB FOR TURF AND 2 INCHES BELOW CURB FOR PLANTERS
5. 2500 PSI CONCRETE FOOTING 12-INCH DIAMETER X 3-INCH BELOW POST
6. UNDISTURBED NATIVE SOIL
7. #3 REBAR / 2 INCHES FROM POST EDGE
8. CONCRETE MOW CURB (2500 PSI)
9. HOLES IN BOTTOM OF POST TO LOCK POST INTO CONCRETE

**SECTION  
NO SCALE**

**NOTES:**

- A. OMIT FENCING WITHIN SIGHT DISTANCE RESTRICTED ZONES.
- B. WHERE PVC FENCING IS ADJACENT TO TRAIL, TURF, OR PROJECT BOUNDARY, INSTALL CONCRETE MOW CURB ALONG FENCE LINE.
- C. FENCING MANUFACTURER, COLOR, AND TEXTURE SHALL BE REVIEWED / APPROVED BY CITY.
- D. CONCRETE SHALL BE CLASS 560-C-3250.
- E. POST & RAIL MATERIAL : HDPE / WALL THICKNESS: 0.25"

APPROVED BY:

*Jonathan S. Li*

4/24/15

DIRECTOR OF PUBLIC WORKS  
JONATHAN GEORGE SMITH

DATE



CITY OF MENIFEE

**FENCE, FOOTING  
AND MOW CURB**

REVISION	BY:	APPROVED	DATE
1	GH	RL	4-01-2017